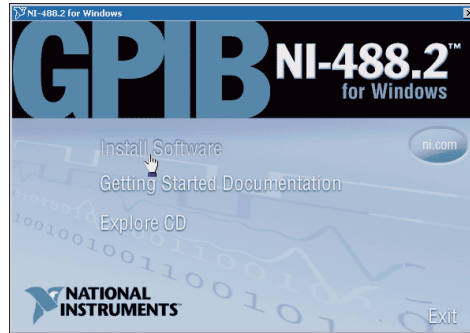
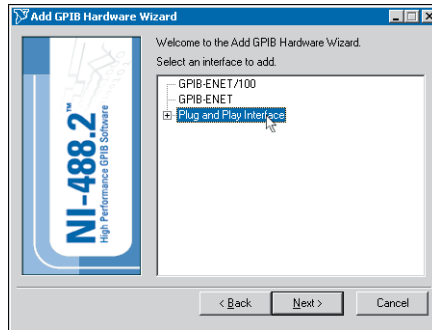


# Getting Started

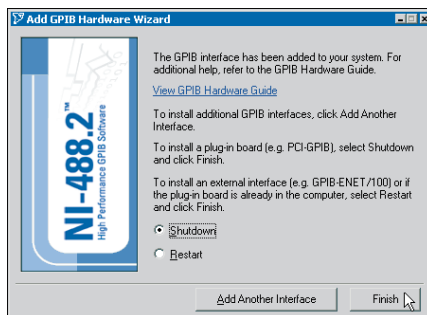
- 1 Insert CD, then choose **Install Software**.



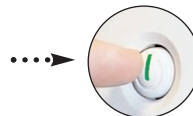
- 2 Select **Plug and Play Interface** and click **Next**.



- 3 Select **Shutdown** and click **Finish**, then power off computer.

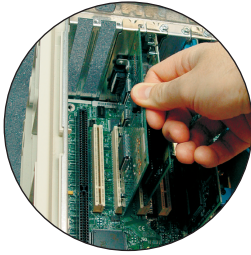


Power off computer



Continue to step 4 ▶

4 Install hardware<sup>1</sup>, then power on computer.



or



Power on computer



5 Run NI-488.2 Getting Started Wizard.

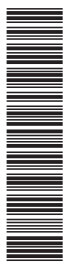


<sup>1</sup> For help installing your hardware, refer to the *GPIB Hardware Guide* (available on the CD through **Getting Started Documentation**).

© 1999–2003 National Instruments Corporation. All rights reserved.

National Instruments™, NI-488.2™, and ni.com™ are trademarks of National Instruments Corporation. Product and company names mentioned herein are trademarks or trade names of their respective companies.

For patents covering National Instruments products, refer to the appropriate location: **Help»Patents** in your software, the `patents.txt` file on your CD, or [ni.com/patents](http://ni.com/patents).



Feb03

371156A-01